



MultiQuip®

**CONCRETE PUMP  
ACCESSORY PRODUCTS**



Your concrete delivery system is an important component of your pumping operation. Our commitment is to provide top quality components and accessories that are versatile and long lasting. All components meet CPMA standards.

## SNAP COUPLINGS - HEAVY DUTY RAISED END

Part number	Size	Weight (lbs.)	Gasket only	Rated working pressure (PSI)
EM28902	2.0"	5	EM289021	1,250
EM28903	2.5"	6.5	EM289031	1,250
EM28904	3.0"	7.5	EM289041	1,850
EM28905	4.0"	11.2	EM289051	1,850
EM28906	5.0"	13.3	EM2890261	1,500



Multiquip uses conforms couplers

## REDUCERS - HEAVY DUTY RAISED ENDS

Part number	Size
EM28018DD	2.0" X 1.5" X 12" Length
EM28019DD	2.5" X 2.0" X 12" Length
EM28001DD	2.5" X 2.0" X 28" Length
EM28003DD	3.0" X 2.0" X 28" Length
EM28004DD	3.0" X 2.0" X 36" Length
EM28005DD	3.0" X 2.5" X 36" Length
EM402552D	4.0" X 2.5" X 53" Length
EM28006DD	4.0" X 3.0" X 28" Length
EM28007DD	4.0" X 3.0" X 36" Length
EM28010DD	5.0" X 4.0" X 36" Length



## PIPE BENDS - 45 DEGREE HEAVY DUTY RAISED ENDS

Part number	Size
EM28132D	2.0" X 45 Degree X 16"
EM28246D	2.5" X 45 Degree X 16"
EM28134D	3.0" X 45 Degree X 16"
EM28114D	3.0" X 45 Degree X 48"
EM28136D	4.0" X 45 Degree X 18"
EM28118D	4.0" X 45 Degree X 48"
EM28138D	5.0" X 45 Degree X 14"
EM28122D	5.0" X 45 Degree X 48"
EM28140D	5.0" X 45 Degree X 24"



## PIPE BENDS - 90 DEGREE HEAVY DUTY RAISED ENDS

Part number	Size
EM23946	3.0" X 90 Degree
EM28131D	2.0" X 90 Degree X 16"
EM28290D	2.5" X 90 Degree X 16"
EM28133D	3.0" X 90 Degree X 16"
EM28113D	3.0" X 90 Degree X 48"
EM28093	4.0" X 90 Degree X 32"
EM28117D	4.0" X 90 Degree X 48"
EM28137D	5.0" X 90 Degree X 14"
EM28121D	5.0" X 90 Degree X 48"



## ELBOW REDUCERS HEAVY DUTY

Part number	Size
EM28157D	4.0" X 3.0" X 90 Degree
EM25837	5.0" X 4.0" X 90 Degree



## DISCHARGE HOSE - FABRIC HEAVY DUTY RAISED END

Part number	Size	Type	Rated working pressure (PSI)
EM27848	2.0" X 12.5 feet	Fabric	1233
EM24841	2.0" X 25 feet	Fabric	1233
EM24844	2.0" X 50 feet	Fabric	1233
EM24846	2.5" X 25 feet	Fabric	1233
EM24849	2.5" X 50 feet	Fabric	1233
EM24923	3.0" X 10 feet	Fabric	1233
EM24852	3.0" X 12.5 feet	Fabric	1233
EM24855	3.0" X 25 feet	Fabric	1233
EM24927	4.0" X 10 Feet	Fabric	1233
EM24860	4.0" X 25 Feet	Fabric	1233
EM24858	4.0" X 12.5 feet	Fabric	1233
EM24930	5.0" X 10" feet	Fabric	1233
EM24862	5.0" X 12.5 feet	Fabric	1233



## STRAIGHT STEEL PLACING PIPE - HEAVY DUTY RAISED ENDS

Part number	Size	Wall thickness
EM28060	2.0 " X 10 Feet	11 gauge
EM28061	2.5 " X 10 Feet	11 gauge
EM28062-3	3.0 " X 3 Feet	11 gauge
EM28062-5	3.0 " X 5 Feet	11 gauge
EM28062	3.0 " X 10 Feet	11 gauge
ME28063-3	4.0 " X 3 Feet	11 gauge
EM28063-5	4.0 " X 5 Feet	11 gauge
EM28063	4.0 " X 10 Feet	11 gauge
EM28065-3	5.0 " X 3 Feet	11 gauge
EM28065-5	5.0 " X 5 Feet	11 gauge
EM28065	5.0 " X 10 Feet	11 gauge
EM28064-3	4.0 " X 3 Feet	9 gauge
EM28064-5	4.0 " X 5 Feet	9 gauge
EM28064	4.0 " X 10 Feet	9 gauge
EM28066-3	5.0 " X 3 Feet	9 gauge
EM28066-5	5.0 " X 5 Feet	9 gauge
EM28066	5.0 " X 10 Feet	9 gauge



## WASH OUT HOOKS - HEAVY DUTY RAISED ENDS

Part number	Size
EM28887	2.0"
EM28888	2.5"
EM28883	3.0"
EM28883X4	4.0" tube with 3.0" end



## WALL HOOKS - HEAVY DUTY RAISED ENDS

Part number	Size
EM2INWHD	2.0"
EM3INWHD	3.0"



## CLEAN OUT BALLS

Part number	Size
EM2COB	2.0"
EM25COB	2.5"
EM28800	3.0"
EM28863	4.0"
EM28864	5.0"



## WATER WASH OUT CAP - HEAVY DUTY RAISED END

Part number	Size
EM24818D	2.0"



## LS SERIES PUMP - ACCUMULATOR NITROGEN PRE CHARGE KIT

Part number	Size
EM98052	-

Accumulator charging / gauge kit for use on bladder or piston accumulators. Includes valve body, check and bleed valve, 0 - 3000 PSI pressure gauge, 10 foot charging hose with nitrogen bottle adaptor.



## WASTE CONTAINMENT TRAY

Part number	Size
EM98267	8 cf. capacity, 4.0 x 6.0 ft.

Portable, lightweight and sturdy made of durable high strength polyethylene. The tray is ideal for containing material spills while pumping concrete in streets or environmentally sensitive areas. Useful for containing fluids while performing equipment maintenance.



## WIRELESS CONTROL

Part number	Description
EM98215Ckit	Model C30HDG and C30HDNI (Gasoline)
EM98216kit	Model C30HDZ (Diesel)
EM98217	Models LS40TD, LS50TD, LS60TD
EM98268C	Models LS300P, LS400, LS500, LS600P
EM98268A	Antenna, LS Series

Miratron wireless, ergonomic controller designed to be comfortably worn on operator's belt. Operating range up to 500 feet, ten channel frequency hopping ensures strong signal for reliable operation.



**LS series**



**C30 series**

## PUMP SYSTEM PRIMING AGENT

Part number	Description
EM98057	Slick Pack II Pumping Aid. 8 oz. Bag
EM98057A	Slick Pack Pump Primer. 8 oz, Bag

Slick-Pak is a dry powder concrete pumping aid, uniquely formulated to provide the concrete pumper with a method for improved pumpability to pump harsh concrete or grout materials.



## OPTIONAL HYDRAULIC STABILIZER KIT

Part number	Description
LSSTAB	Models LS400, LS500, LS600

Stabilizer kit consists of hydraulic cylinders, directional valve, hydraulic hoses and attachment hardware.



## OPTIONAL HOPPER GRATE VIBRATORS

Part number	Description
EM23101	Air vibrator assembly, model C30HDG.
EM231011	Air vibrator only, Model C30HD series
EMDC400K	Electric vibrator assembly, model LS series Pumps
EMDC400	Electric vibrator only, LS series



## INTERNATIONAL TOOL KIT - LS SERIES PUMP

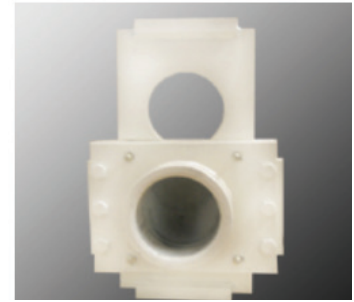
Part number	Description
EMTOOLKIT	American SAE tools (mechanical repair)

Assorted SAE tools including drive socket sets, open end wrenches, combination wrenches, hex keys, screwdriver, drilling hammer and pry bar.



## SHUT OFF VALVE - HEAVY DUTY ENDS

Part number	Size
EM4HSOV	4.0" Hammer valve
EM5HSOV	5.0" Hammer valve



## SHOTCRETE ACCESSORIES

Part number	Size
Mayco Wetgun Shotcrete nozzle assembly	
EM23808D	2.0"
EM23930D	2.5"



## REPLACEMENT PARTS FOR MAYCO WETGUN SHOTCRETE NOZZLE

Part number	2.0"	3.0"
Rubber Nozzle Tip 1 3/8" Orifice	EM23806	n/a
Rubber Nozzle Tip 1 1/4" Orifice	EM23807	EM23935
Rubber Nozzle Tip 1 1/2" Orifice	N/A	EM23935
Nozzle Clamp	EM23805	EM23933
Air Insert Assembly	EM23804	EM23932
Steel Body	EM23803	EM23934
O-Ring	EM20816	EM50466
Air Shut Off Valve	EM23411	EM23413
3/4" Elbow	EM23412	EM23450
3/4" Nipple	EM23410	N/A
3/4" Air Coupler	EM23409	EM23409

## CONTACT INFORMATION

PARTS DEPT	SERVICE DEPT	WARRANTY DEPT	UNIT SALES
800.306.2926	800.478.1244	800.421.1244 x279	800.421.1244
fax: 800.672.7877	fax: 310.537.4259	fax: 310.537.1173	fax: 310.537.3927

Rolly Cox  
Richard Boucher  
Pete Bushey

740.350.4809  
310.780.5575  
310.400.1331

Application expert  
Application expert  
Parts expert