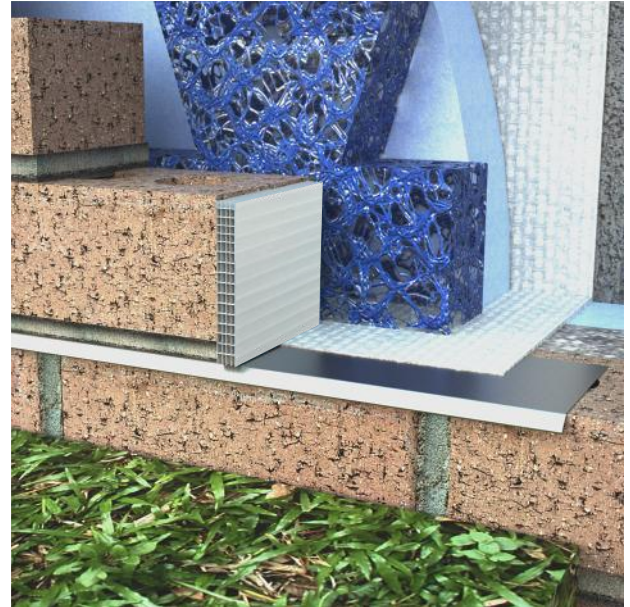


PRODUCT SUBMITTAL

WIRE-BOND

#3601 Cell Vent



DESCRIPTION / MATERIAL CONFORMANCE

Ultra Violet resistant polypropylene copolymer.

Cell Vent consists of many small, adjacent passageways bonded together in one unit. Cellular composition provides easy drainage for moisture along the full height of the head joint. Laminate consisting of four layers, fluted, extruded sheed made from polypropylene copolymer and laminated with pressure sensitive adhesive.

Ultra Violet stabalized for extended weatherability and corona treated to enhance bondability to other substrates.

Properties:

Nominal Overall Thickness (lin.) **.325 +/- 10%**
 Nominal Skin Thickness (in.) **.010 +/- .002**
 Nominal Upright Thickness (in.) **.012 +/- .002**
 0Heat Distortion Temp. * Approx. **190 F**

* As supplied by Resin Manufacturer

The above values are average values and should not be used as minimums for material specifications.

Flammability:

Minimum self ignition temperature **ASTM-D 1929 Method B = 715 F**
 Minimum flash ignition temperature **ASTM-D 1929 Method B = 595 F**
 Burning Rate **ASTM D-635-72 = 0.80 in./min.**
 UL Flame Class **94**

DIMENSIONS / COLORS

Standard Size:

3/8 W" x 2-1/2" D x 3-3/8" L

Jumbo Size:

3/8 W" x 3-1/2" D x 3-3/8" L

Custom sizes available for 8" and 12" CMU

Colors:

Clear White Tan Cocoa
 Gray Brown Black



NOTE: The product is non-toxic. The products of combustion are carbon dioxide, carbon monoxide and smoke.

Please note that this data is on resin, and we do not have any specific data on the product itself.

Corporate Office: 400 Rountree Rd Charlotte, NC 28217
 TEL: (800) 849-6722 FAX: (704) 525-3761

Mailing Address: P.O. Box 240988 Charlotte, NC 28224

WIRE-BOND

www.wirebond.com

Memphis Plant: 2365 Harbor Ave. Memphis, TN 38113
 TEL: (800) 441-8359 FAX: (901) 775-9449

Mailing Address: P.O. Box 13124 Memphis, TN 38113